



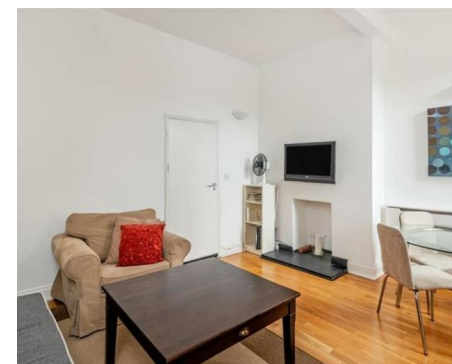
NEWINGTON
LONDON

1 Bedrooms

Apartment

Located in London

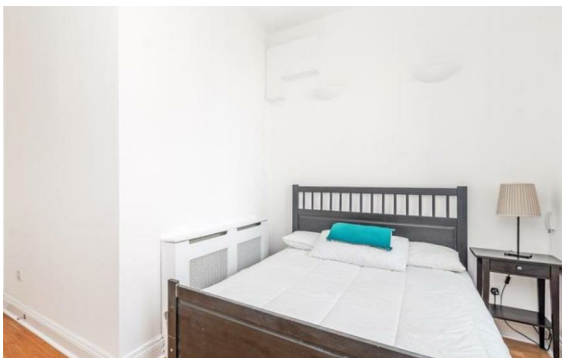
£530 Per Month



info@newingtonstates.com

<http://www.newingtonstates.com>

020 7724 2233



This bright one bedroom apartment is situated on the third floor (with lift) of a sought after purpose built block in the heart of Connaught Village. Comprising of large double bedroom, one bathroom, spacious reception with lovely furniture leading into the fully fitted kitchen with excellent appliances and plenty of space. Further benefits include having a 24 hour porter and CCTV for added security.

A superb range of cafes, shops, bars and restaurants can be found around Connaught Village, Edgware Road and the nearby Mayfair. Kendal Street is just a short walk to Marble Arch station (Central line / Zone 1) and Oxford Street and Hyde Park are just moments away.

EPC rating: C

Energy Efficiency Rating: C

Agents Note: Whilst every care has been taken to prepare these particulars, they are for guidance purposes only. All measurements are approximate and are for general guidance purposes only and whilst every care has been taken to ensure their accuracy, they should not be relied upon and potential buyers/tenants are advised to recheck the measurements.

NEWINGTON LONDON

60 Upper Montagu Street

London

W1H 1SN

020 7724 2233

info@newingtonstates.com

<http://www.newingtonstates.com>